

WELCOME TO ARAYMOND

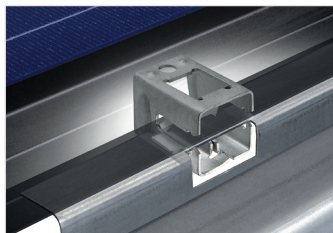
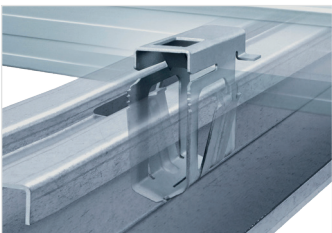
International expert in **assembly, fastening & fluid handling** systems with 160 years of industrial excellence and full partnership approach.



SPEEDING UP THE ENERGY TRANSITION

Since the early 2000s, ARaymond has been designing **screwless solutions** to make the assembly and installation of photovoltaic solar systems **faster and easier**. Supporting customers in reducing the overall cost of renewable energies—including PV fasteners, grounding clips, and cable management components tailored for the solar market.

MORE THAN
22 GW
INSTALLED WORLDWIDE
USING
ARAYMOND FASTENERS



CONTACT US

AMERICAS

BRAZIL
contact.br@araymond-energies.com

ASIA

INDIA
contact.in@araymond-energies.com

EMEA

FRANCE
contact@araymond-energies.com

www.araymond-energies.com

EN-2026 © ARaymond Energies SAS (RCS Grenoble 798 705 604) - ZI Technisud 123 rue Hilaire de Chardonnet - 38100 Grenoble - FRANCE has designed this leaflet. "ARaymond Network" means a network of companies which have a license of use of ARAYMOND". This leaflet is provided for information purposes only and does not constitute an offer or an agreement. ARaymond Energies makes no warranty or representation whatsoever, express or implied, including but not limited to the accuracy, reliability, novelty, completeness, fit for a particular purpose or merchantability of the information contained in it. If you need further information, please contact ARaymond Energies. Photo Credit: ©ARaymond Network, ©Utopikphoto, ©Adobe Stock.

ARaymond®

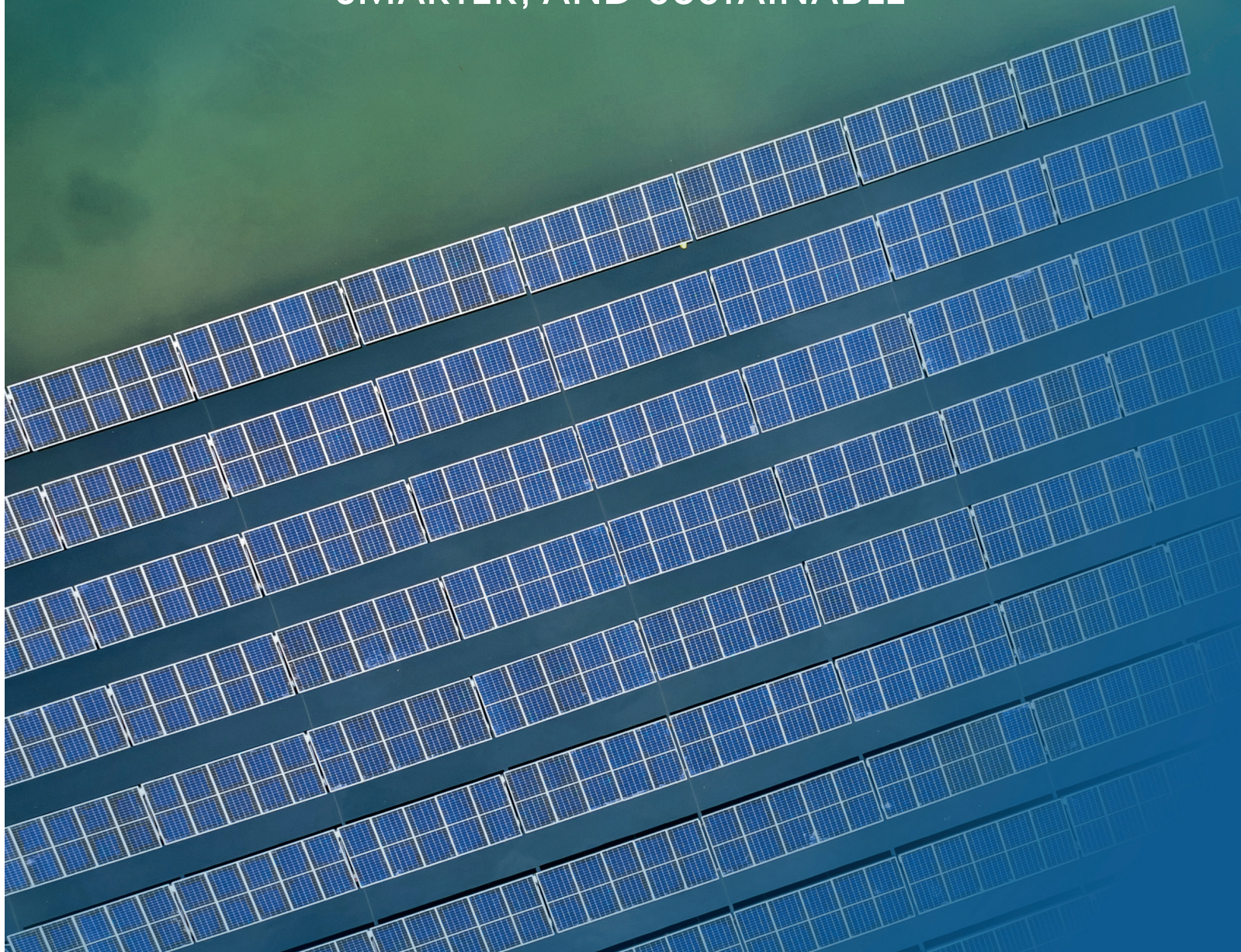


ARaymond®

NELUMA™

FLOATING PV

MADE MODULAR,
SMARTER, AND SUSTAINABLE



FOR OPTIMIZED CAPTURE OF SOLAR ENERGY

NELUMA™

A turnkey, smart-engineered **floating photovoltaics system** setting a new standard for **modular, sustainable solar energy production** on freshwater.



**EASY, FLEXIBLE,
FAST INSTALLATION**

- Ready-to-use **mobile micro-factory**—on-site production and assembly
- Installation **adaptable** to on-site resources (time, labor)—**500 Man-Hours/MWp**



- **Optimized logistics**—minimal transportation and storage needed
- **Temporary lakeshore use**, leaving no trace, and respecting the surrounding ecosystem

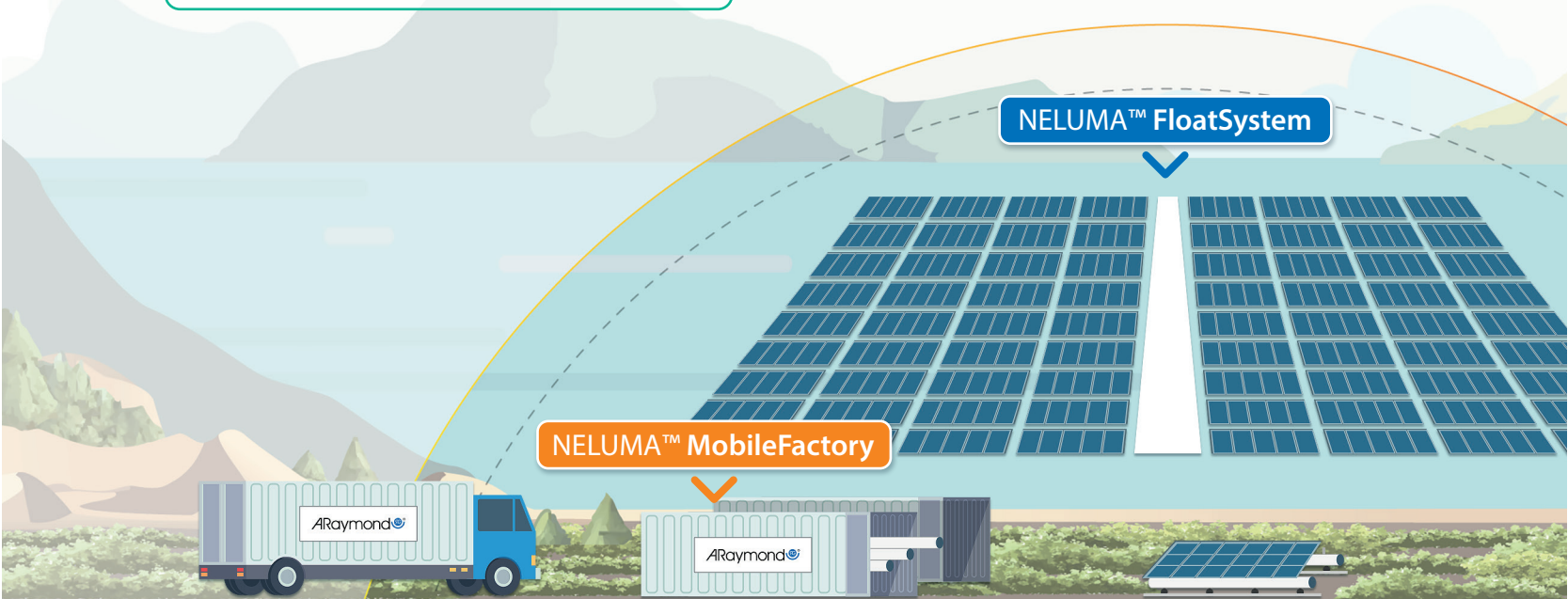


**EXCELLENT ENVIRONMENTAL
INTEGRATION**

- **Customizable layout**—high adaptability to lake shape and maximized power density
- Panel-size **modularity**
- Minimized anchor points



- **Low carbon footprint**
- **Optimized water coverage ratio**
- Allows **water-air exchange**





FOR OPTIMIZED CAPTURE OF SOLAR ENERGY



FUNCTIONAL MAINTENANCE

- **Simplified servicing**—mobile maintenance platform gives easy and practical access to panels
- **Extended product lifetime**—services custom and on-demand



Structure eco-designed to be lightweight, using **recyclable aluminum**.

NELUMA™ Services



EFFICIENT AND CONFIGURABLE DESIGN

ORIENTATION	North-South
TILT ANGLE	Up to 15°
FLOATS MATERIAL	100% recyclable, non-flammable marine-grade aluminum
MOORING	Innovative catenary system delivering superior force absorption and load distribution
ANCHORING	Site specific
TEMPERATURE RESISTANCE	-40°C to +85°C
WIND RESISTANCE	160 km/h continuous Gust up to 220 km/h
SNOW LOAD RESISTANCE	Up to 650 N/m ²
WAVE RESISTANCE	Up to 1 m
CORROSION RESISTANCE	IEC 60068-2-52
MINIMUM WATER LEVEL	1 m
DESIGN STANDARDS	Design according to IEC 61215-2 and DNVGL-RP-0584