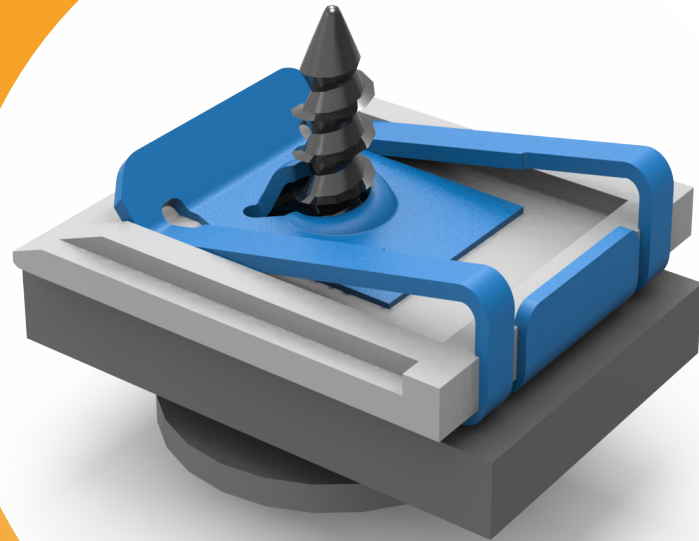


PANEL EDGE NUTS (U-NUTS)

(U-SHAPED SPEED NUTS[®])



NEW, Complete Line of Single-impession Panel Edge Nuts also called U-Nut Speed Nuts[®]

Best-In-Class Product Features

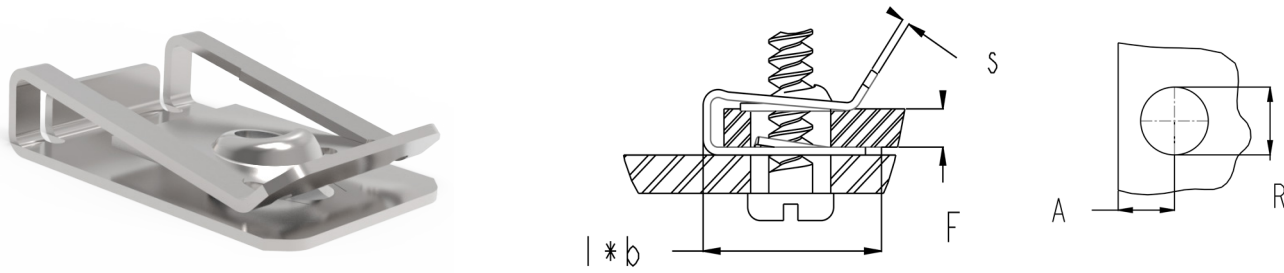
Ideal for Most Tapping Screw & Many Machine Screw Applications

Opportunity to Consolidate Several Parts into One Preferred Solution



On Panel Edges

U-Shaped Speed Nut® - Metric Classification



Metric Tapping Screws

Part Number	Thread Specification	Panel Thickness (F)	Throat Distance (A)	Hole Diameter Min. (R)	Length (l)	Width (b)	Material Thickness (s)
239190	ST4.2 (8-18)	0.51 - 3.43	5.84 - 6.86	7.37	16.97	15.88	0.71
239192	ST4.2 (8-18)	0.51 - 3.43	12.19 - 13.21	7.37	23.04	15.88	0.71
239203	ST4.2 (8-18)	3.45 - 6.35	5.84 - 6.86	7.37	16.97	15.88	0.71
239204	ST4.2 (8-18)	3.45 - 6.35	12.19 - 13.21	7.37	23.04	15.88	0.71
239197	ST4.8 (10-16)	0.51 - 3.43	5.84 - 6.86	7.37	16.97	15.88	0.79
239198	ST4.8 (10-16)	0.51 - 3.43	12.19 - 13.21	7.37	23.04	15.88	0.79
239210	ST4.8 (10-16)	3.45 - 6.35	5.84 - 6.86	7.37	16.97	15.88	0.79
239211	ST4.8 (10-16)	3.45 - 6.35	12.19 - 13.21	7.37	23.04	15.88	0.79
253092	ST6.3 (14-14)	0.51 - 3.43	5.84 - 6.86	7.37	16.97	15.88	-
253093	ST6.3 (14-14)	0.51 - 3.43	12.19 - 13.21	7.37	23.04	15.88	-
253094	ST6.3 (14-14)	3.45 - 6.35	5.84 - 6.86	7.37	16.97	15.88	-
253095	ST6.3 (14-14)	3.45 - 6.35	12.19 - 13.21	7.37	23.04	15.88	-

Metric Machine Screws

Part Number	Thread Specification	Panel Thickness (F)	Throat Distance (A)	Hole Diameter Min. (R)	Length (l)	Width (b)	Material Thickness (s)
253088	M6.0 x 1.0	0.51 - 3.43	5.84 - 6.86	7.37	16.97	15.88	0.71
253089	M6.0 x 1.0	0.51 - 3.43	12.19 - 13.21	7.37	23.04	15.88	0.71
253090	M6.0 x 1.0	3.45 - 6.35	5.84 - 6.86	7.37	16.97	15.88	0.71
253091	M6.0 x 1.0	3.45 - 6.35	12.19 - 13.21	7.37	23.04	15.88	0.71

Most parts manufactured in spring steel

U-Shaped Speed Nut® - Imperial Classification

Imperial Tapping Screws

Part Number	Thread Specification	Panel Thickness (F)	Throat Distance (A)	Hole Diameter Min. (R)	Length (l)	Width (b)	Material Thickness (s)
239190	8-18 (ST4.2)	0.020 - 0.135	0.229 - 0.270	0.290	0.668	0.625	0.028
239192	8-18 (ST4.2)	0.020 - 0.135	0.479 - 0.520	0.290	0.907	0.625	0.028
239203	8-18 (ST4.2)	0.136 - 0.250	0.229 - 0.270	0.290	0.668	0.625	0.028
239204	8-18 (ST4.2)	0.136 - 0.250	0.479 - 0.520	0.290	0.907	0.625	0.028
239197	10-16 (ST4.8)	0.020 - 0.135	0.229 - 0.270	0.290	0.671	0.625	0.031
239198	10-16 (ST4.8)	0.020 - 0.135	0.479 - 0.520	0.290	0.907	0.625	0.031
239210	10-16 (ST4.8)	0.136 - 0.250	0.229 - 0.270	0.290	0.671	0.625	0.031
239211	10-16 (ST4.8)	0.136 - 0.250	0.479 - 0.520	0.290	0.907	0.625	0.031
253092	14-14 (ST6.3)	0.020 - 0.135	0.229 - 0.270	0.290	0.671	0.625	-
253093	14-14 (ST6.3)	0.020 - 0.135	0.479 - 0.520	0.290	0.907	0.625	-
253094	14-14 (ST6.3)	0.136 - 0.250	0.229 - 0.270	0.290	0.671	0.625	-
253095	14-14 (ST6.3)	0.136 - 0.250	0.479 - 0.520	0.290	0.907	0.625	-
239194	10-12	0.020 - 0.135	0.229 - 0.270	0.290	0.671	0.625	0.031
239195	10-12	0.020 - 0.135	0.479 - 0.520	0.290	0.907	0.625	0.031
239206	10-12	0.136 - 0.250	0.229 - 0.270	0.290	0.671	0.625	0.031
239208	10-12	0.136 - 0.250	0.479 - 0.520	0.290	0.907	0.625	0.031

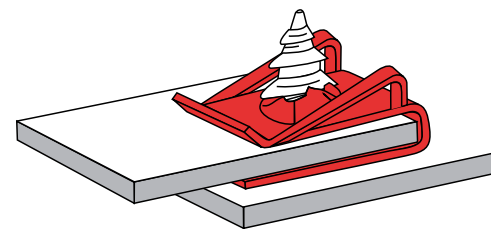
Imperial Machine Screws

Part Number	Thread Specification	Panel Thickness (F)	Throat Distance (A)	Hole Diameter Min. (R)	Length (l)	Width (b)	Material Thickness (s)
239200	UNC 10-24	0.020 - 0.135	0.229 - 0.270	0.290	0.662	0.625	0.022
239201	UNC 10-24	0.020 - 0.135	0.479 - 0.520	0.290	0.898	0.625	0.022
239213	UNC 10-24	0.136 - 0.250	0.229 - 0.270	0.290	0.662	0.625	0.022
239214	UNC 10-24	0.136 - 0.250	0.479 - 0.520	0.290	0.898	0.625	0.022
253096	UNC 1/4-20	0.020 - 0.135	0.229 - 0.270	0.290	0.671	0.625	0.028
253098	UNC 1/4-20	0.020 - 0.135	0.479 - 0.520	0.290	0.907	0.625	0.028
253097	UNC 1/4-20	0.136 - 0.250	0.229 - 0.270	0.290	0.671	0.625	0.028
253099	UNC 1/4-20	0.136 - 0.250	0.479 - 0.520	0.290	0.907	0.625	0.028

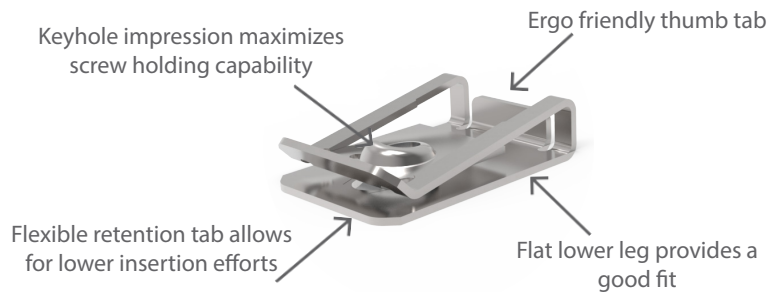
Most parts manufactured in spring steel

APPLICATION INFORMATION

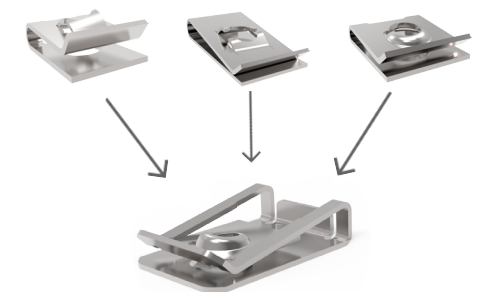
- Used to provide simple, rapid attachment of mating panels
- Parts self-retain in screw-receiving position
- Self-retention feature improves assembly time
- Corrects misalignment in panel mounting holes
- Part does not turn as screw is driven & will not freeze on screw threads
- Serviceable - parts disassemble easily & reliably
- Can be used wherever a screw or bolt is used
- Easy to assemble, requiring no special tools
- Improves torque capability of the tapping screw joint
- Manufactured on new, state-of-the-art equipment
- All parts are manufactured in the USA



PRODUCT FEATURES



PRODUCT CONSOLIDATION



The universal design allows part to accommodate a wide panel range and keeps the screw perpendicular to panels which reduces strip-out.

Combine the usage of several parts into one.



Disclaimer

© A. Raymond Tinnerman Industrial, Inc.

*"ARaymond Tinnerman Industrial" means A. Raymond Tinnerman Industrial, Inc. 02609G – 1060 W. 130th Street, Brunswick, OH 44212, which is an independent company of ARaymond Network and which is responsible for this flyer.

**"ARaymond Network" in this flyer means a network of independent companies that have a licence of trademark. A. RAYMOND TINNERMAN INDUSTRIAL, Inc. is an independent company that belongs to the ARaymond Network. ARaymond™ is used as a trademark. "Flyer" means the information and any materials available in this flyer including, without any limitation, pictures, datasheets, product descriptions, etc. This flyer does not constitute an offer or an agreement of any kind. This flyer does not constitute a technical note. The flyer is provided "as is" and only for evaluation purpose. A. RAYMOND TINNERMAN INDUSTRIAL, Inc. makes no warranty or representation whatsoever regarding the flyer its use or its suitability to meet specific needs. A. RAYMOND TINNERMAN INDUSTRIAL, Inc. DISCLAIMS ALL WARRANTIES, EXPRESS OR IMPLIED, INCLUDING BUT NOT LIMITED TO THE ACCURACY, RELIABILITY, NOVELTY, COMPLETENESS, MERCHANTABILITY OR FITNESS FOR ANY PARTICULAR PURPOSE OF THE INFORMATION, NOR THAT WILL ITS USE NOT INFRINGE ON ANY THIRD PARTY'S RIGHTS. A. RAYMOND TINNERMAN INDUSTRIAL, Inc. is not liable for any incidental, consequential or special damages of any kind due to the use of the flyer. The flyer and/or its contents is copyrighted works of A. RAYMOND TINNERMAN INDUSTRIAL, Inc. and may be also protected by trademark laws, patent laws or other laws. All other copyrights, trademarks or patents not owned by A. RAYMOND TINNERMAN INDUSTRIAL, Inc. are the property of their respective owners. The only use permitted is to consult the flyer. Any rights not expressly granted herein are reserved. Except as expressly specified in these terms, nothing contained herein shall be construed as conferring any license or right of any copyright, trademark, patent, or any proprietary rights. Any unauthorized use of this flyer may violate rights, and so, A. RAYMOND TINNERMAN INDUSTRIAL, Inc. or any third party concerned may claim any damages or losses suffered. If you need further information, please contact A. RAYMOND TINNERMAN INDUSTRIAL, Inc.

www.araymond-industrial.com

A. Raymond Tinnerman Industrial, Inc. 02609G
1060 W. 130th Street
Brunswick, OH 44212

Email: contact.us@araymond-industrial.com

Tel: 330.220.5100