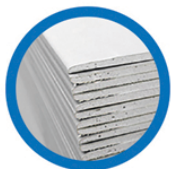


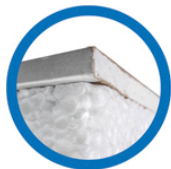
## PLUG AND HOOK



**GOLD**  
**PLUG**  
**055813009**



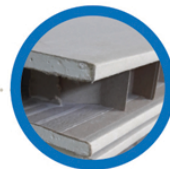
Plasterboard / Drywall / Gypsum board...  
up to 13 mm



+ insulation



Fiber reinforced  
plasterboard, fiber cement



Honeycomb  
partition walls



Panel of compressed  
wood fibers (fiberboard,  
hardboard...) 3 to 5mm



))) **FIXING WITHOUT DRILLING**

))) **QUICK and EASY**

))) **JAGGED TIP**

(easy insertion, accurate positioning)

))) **ANTI ROTATION**

))) **FLUSH HEAD**

))) **FIRE RESISTANT**

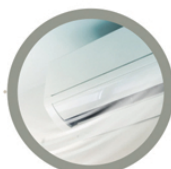
))) **EASY REMOVING**

(no damage, recyclable)

## ) Applications



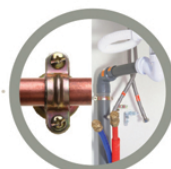
Electrical heating



Ventilation and air conditioning



Electrical equipment  
and accessories



Plumbing equipment  
and accessories



Lights



TV



Shelves



Decoration

**ARaymond**   
MORE THAN FASTENING



## Technical description

Reference : **GOLD 05581 3009**

))) Passivated zinc-plated steel // Corrosion protection : Zn + Cr3

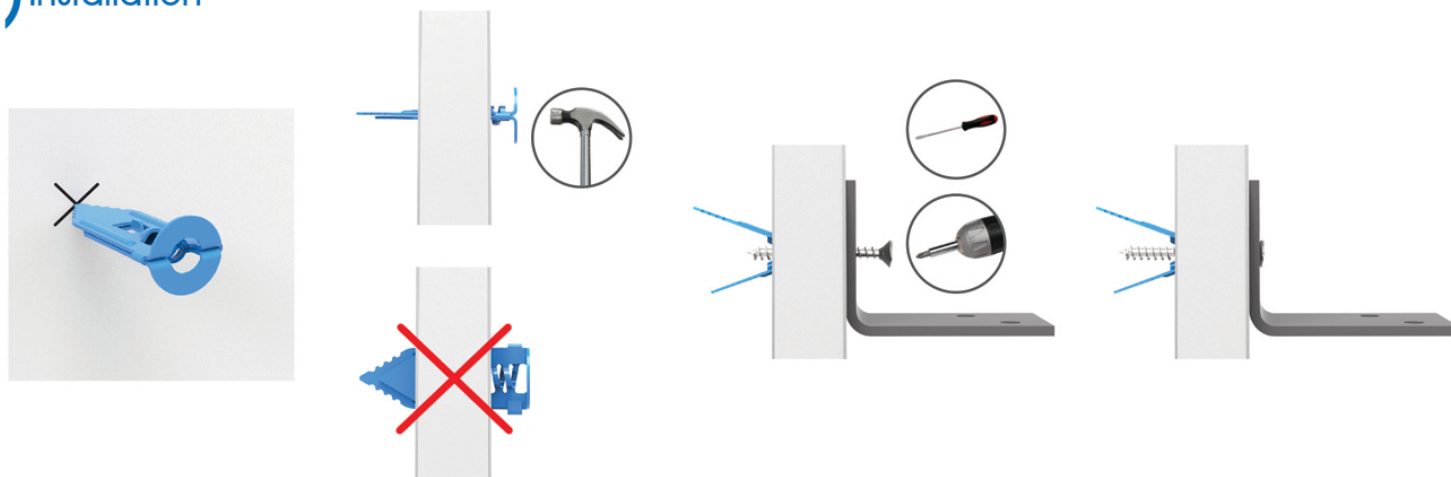
Salt spray 408 hours red rust

))) To be used with wood screws (Ø 3,5 to 5 mm, minimum length 30 mm)

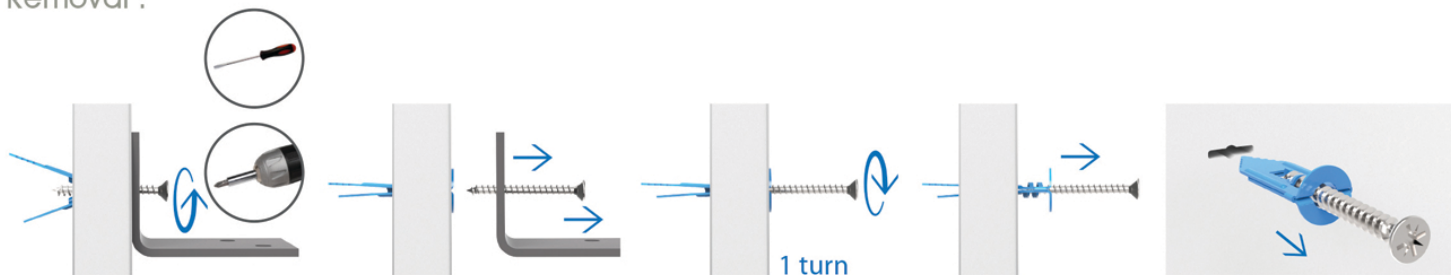
|                      | Pulling off <sup>1)</sup>  | Shearing <sup>1)</sup>  |
|----------------------|---|--|
| Plasterboard (13 mm) | 15 daN  | 30 daN   |
| Fiber cement (13 mm) | 15 daN  | 50 daN   |

1) = indicative values for information purposes, obtained with wood screws Ø4x30 mm, safety factor 1: 2.

## Installation



Removal :



Made  
in  
France



**ARAYMOND FRANCE SAS**

1 Rue Louis Besançon  
38120 Saint-Égrève  
contact-batiment@araymond.com  
Tel. + 33 4 56 52 62 58  
www.araymond-building.com

**ARaymond**   
MORE THAN FASTENING