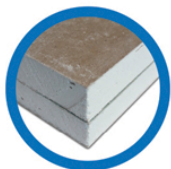


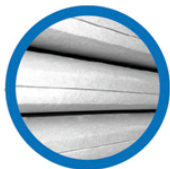
## PLUG AND HOOK



**XL<sup>TM</sup>**  
**PLUG**  
**01 7232004**



Double plasterboard  
up to 26 mm  
(2X13 mm)



Plasterboard  
18 to 20 mm



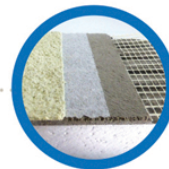
Double fiber reinforced  
plasterboard, fiber  
cement up to 26 mm  
(2X13 mm)



Plaster  
block



Cellular  
concrete



External Insulation  
(ETICS)



- ))) **FIXING WITHOUT DRILLING**  
(except plaster block and certain types  
of cellular concrete)
- ))) **QUICK and EASY**
- ))) **JAGGED TIP**  
(easy insertion, accurate positioning)
- ))) **ANTI ROTATION**
- ))) **FLUSH HEAD**
- ))) **FIRE RESISTANT**

## ) Applications



Heating



Ventilation and air conditioning



Furniture  
and storage



Handrails



Windows





Downspout

## Technical description

Reference : XL 017232004

))) Quenched steel // Corrosion protection : Zn + Cr3 // Salt spray hold 360 hours red rust

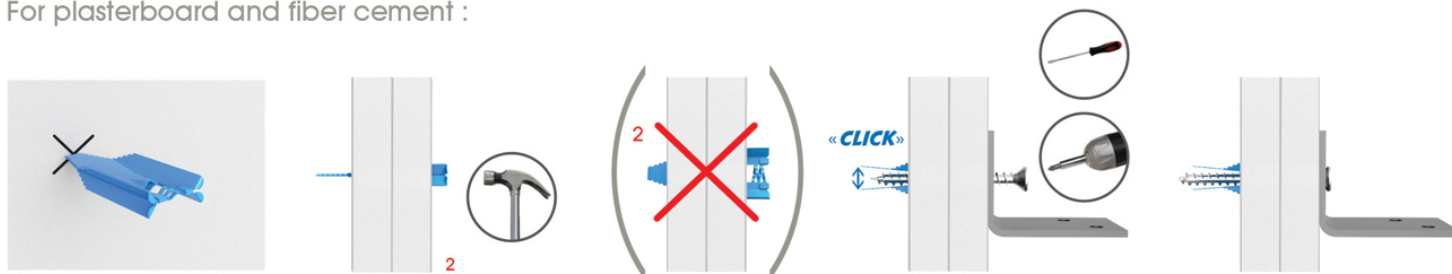
))) Wood screws (Ø3 to 5 mm, minimum length 45 mm)

	Pulling off <sup>1)</sup> 	Shearing <sup>1)</sup> 
Double plasterboard (26 mm)	30 daN	70 daN
Plaster block	35 daN	90 daN
Cellular concrete (low density)	35 daN	60 daN
Cellular concrete (high density)	70 daN	120 daN
External Insulation (ETICS)	12 daN	50 daN
Fiber cement (2X13 mm)	45 daN	80 daN

1) = indicative values for information purposes, obtained with wood screws Ø4,5x50 mm.

## Installation

For plasterboard and fiber cement :



For plaster blocks and some specific cellular concrete :



Ø 5 to 6 mm

